

NO.	DATE	REVISION

**LOT 11**  
**HAWKS PRAIRIE INDUSTRIAL PARK**  
 7921 NE 29th AVE, LACEY, WA 98516

PROJECT NUMBER: 16-07-001  
 DATE:    
 REVISION DATE:    
 DRAWN BY:    
 PROJECT MANAGER:  

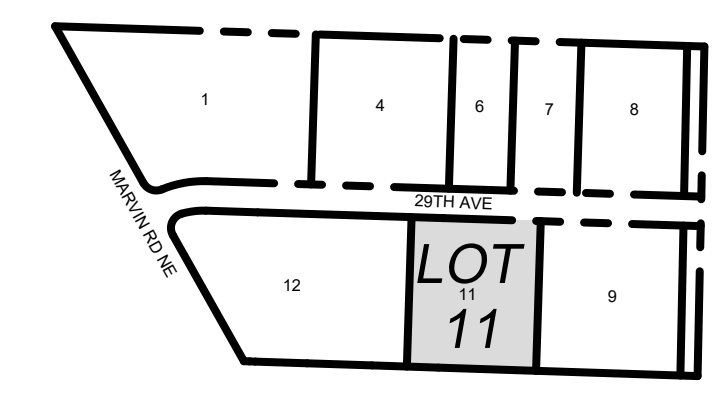
THESE DRAWINGS ARE PROPERTY OF KAUFMAN CONSTRUCTION AND DEVELOPMENT. COPY OR REPRODUCTION OF THESE DOCUMENTS OR THE CONTENT IS PROTECTED BY COPYRIGHT LAW. COPIES SHALL NOT BE MADE WITHOUT WRITTEN CONSENT.

LOT 11  
**A1.1**  
 SITE PLAN

**PROJECT DATA**

LOT ADDRESS: LOT 11 HAWKS PRAIRIE IND. PARK  
 7921 NE 29TH AVE, LACEY, WA 98516  
 PARCEL # 52870001100

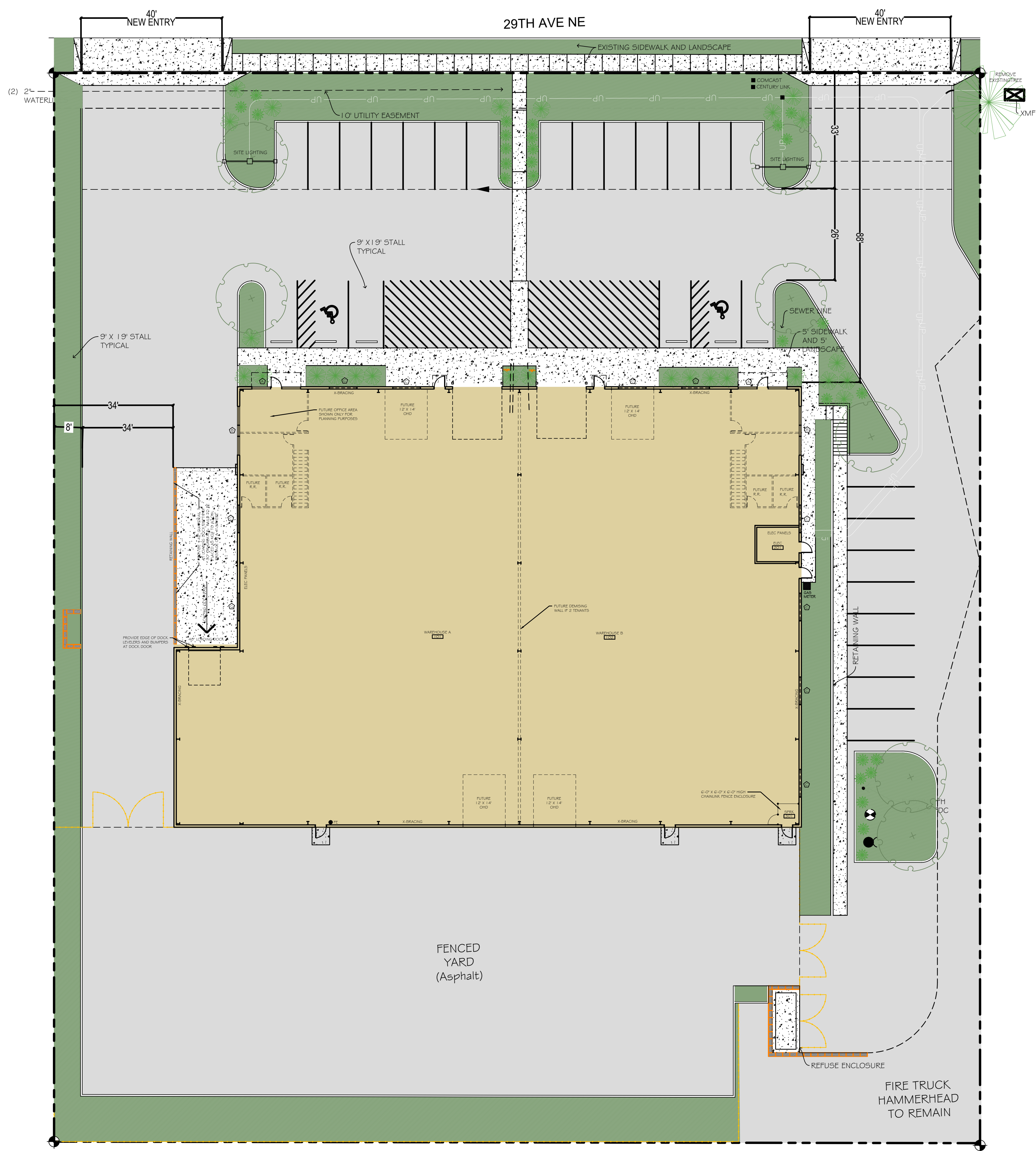
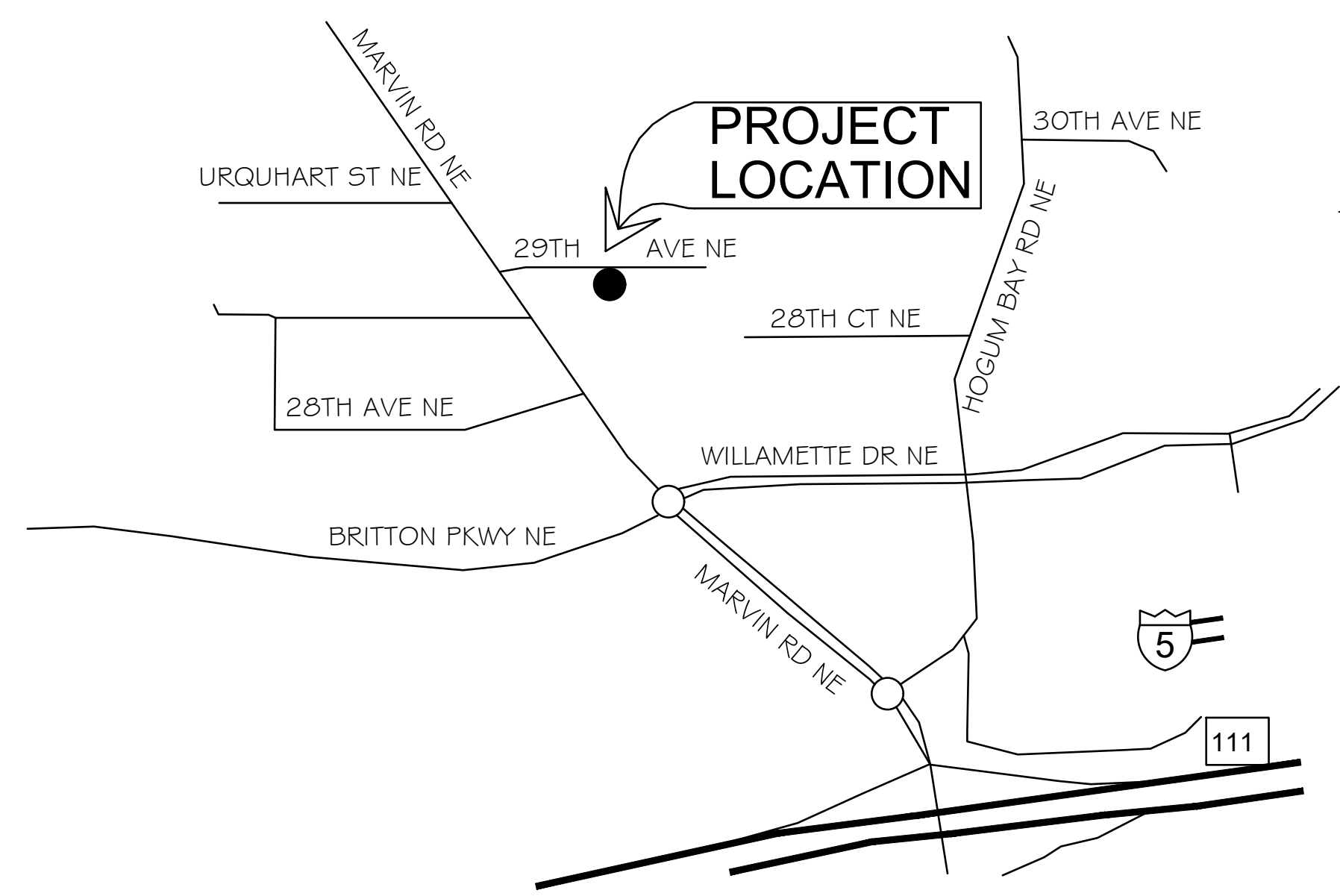
LOT SIZE: 1.83 ACRES (79,866 SF)  
 MAX DEVELOPMENT: 63,893 SF (80%)  
 SETBACKS: 15' FRONT, REAR, SIDES  
 BUILDING SIZE: 20,918 SF  
 BUILDING HEIGHT: MAX HT ALLOWED 45'  
 IBC CONSTRUCTION TYPE: I1B (FULLY SPRINKLERED)  
 NUMBER OF PARKING SPACES: 24 (SPACE IN FENCED YARD FOR ADDITIONAL STALLS)  
 ZONING: LI-C (LIGHT INDUSTRIAL-COMMERCIAL)  
 LANDSCAPING: 8' TYPE II REQUIRED ALL SIDES  
 PROPOSED USE: F-1 / S-1 WITH ASSOCIATED OFFICE AND/OR RETAIL SPACE  
 OCCUPANT: NO TENANT AT THIS TIME, BUILDING TO ACCOMMODATE 1 OR 2 TENANTS



**HAWKS PRAIRIE INDUSTRIAL PARK**

**NOTE:**  
 REFER TO CIVIL PLANS FOR ALL BOUNDARY, UTILITY, GRADING, PAVING AND LANDSCAPING LOCATIONS, DIMENSIONS AND DETAILS CONCERNING THIS PROJECT.

**VICINITY MAP**



**SITE PLAN**  
 SCALE: 1"=40'-0"