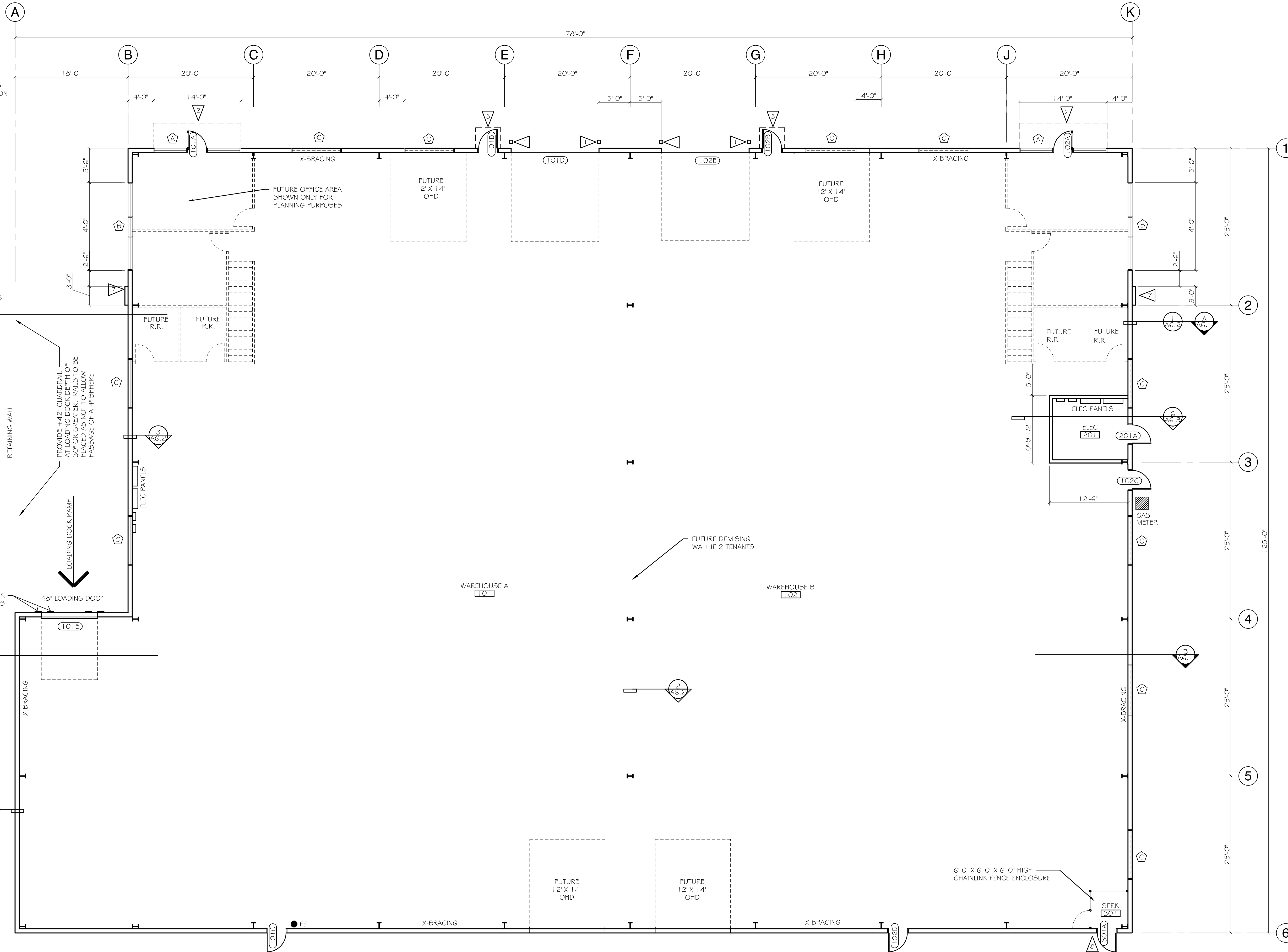


**NOTES**

- ALL DIMENSIONS ARE TO:  
• CENTERLINE OF STRUCTURE  
• FACE OF STUD FRAMING  
• FACE OF FRAMING OPENING  
• EXTERIOR OF STEEL LINE
- REPORT ANY DISCREPANCIES OR CONFLICTS W/ DIMENSIONS TO KAUFMAN CONSTRUCTION PROJECT MANAGER.
- PROVIDE 4" RUBBER BASE AT ALL STUD WALLS BOTH SIDES

- 1 6" X 48" CONCRETE FILLED TS BOLLARD, PAINT
- 2 3" DEEP X 5'-6" HIGH X 14" WIDE TUBESTEEL AND METAL PANEL CANOPY
- 3 3" DEEP X 5'-6" HIGH X 4" WIDE TUBESTEEL AND METAL PANEL CANOPY
- 4 3" DEEP X 3'-0" HIGH X 3" WIDE TUBESTEEL AND METAL PANEL CANOPY
- 5 3" DEEP X 14'-0" WIDE PREFAB METAL CANOPY WITH ROD/TURNBUCKLE SUPPORTS BY METAL BUILDING MANUF.
- 6 5' DEEP X 27'-0" WIDE (2 DIRECTIONS) PREFAB METAL CANOPY WITH ROD/TURNBUCKLE SUPPORTS BY METAL BUILDING MANUF.
- 7 DECORATIVE METAL ACCENT WALL PANEL (SEE SHEET A5.1 ELEVATIONS)
- 8 DURABLE, CONTRASTING SIGN MOUNTED TO DOOR TO READ "FIRE SPRINKLER RISER ROOM" AS APPROVED BY FIRE MARSHALL
- 9 PERMANENT, CONTRASTING SIGN MOUNTED NEAR TOP OF WALL TO READ "NOTICE - NO STORAGE ABOVE"



NO.	DATE	REVISION

**LOT 11**  
**HAWKS PRAIRIE INDUSTRIAL PARK**  
7921 NE 29th AVE, LACEY, WA 98516

PROJECT NUMBER: 16-07-001  
DATE: 12-13-17  
REVISION DATE:  
DRAWN BY: LSH/WFK  
PROJECT MANAGER: RILEY WALL

THESE DRAWINGS ARE PROPERTY OF KAUFMAN CONSTRUCTION AND DEVELOPMENT. COPY OR REPRODUCTION OF THESE DOCUMENTS OR THE CONTENT IS PROTECTED BY COPYRIGHT LAW. COPIES SHALL NOT BE MADE WITHOUT WRITTEN CONSENT.

LOT 11  
**A2.1**  
FLOOR PLAN

**FLOOR PLAN**  
SCALE: 1/8" = 1'-0"  
A